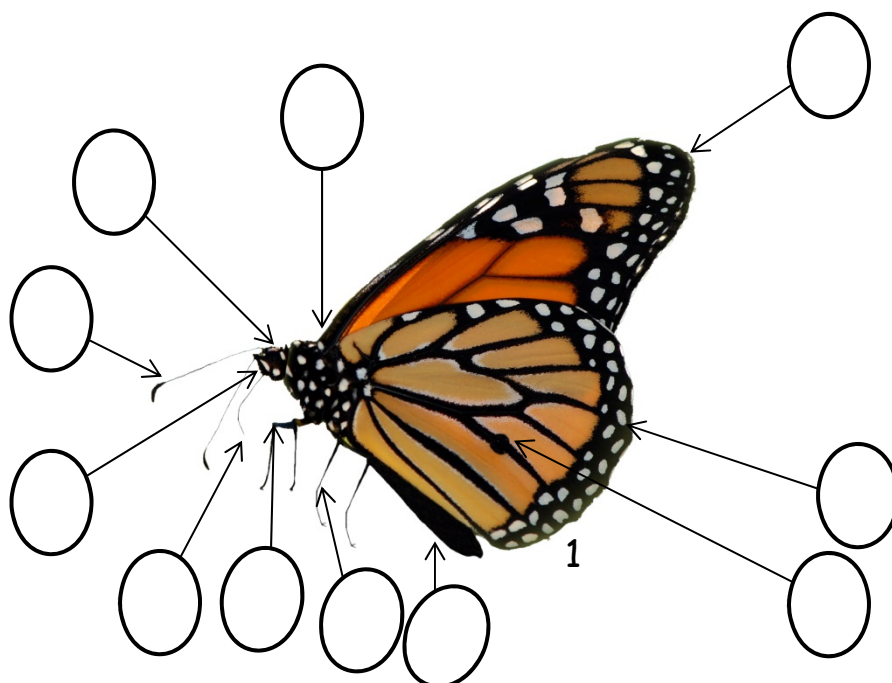




Butterfly Anatomy

Can you match the correct parts to the butterfly? Write the correct number in the circle. Fill in the blanks below to complete the page.

- 1. Fore Wing 2. Abdomen 3. Proboscis 4. Hind Wing
- 5. Antenna 6. Thorax 7. Joint 8. Scent Spot
- 9. Legs 10. Head 11. Compound eye

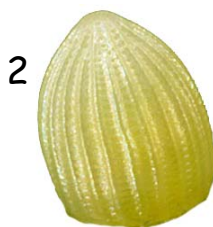


1. This is a _____

2. This is an _____



3. This is a _____



4. This is a _____

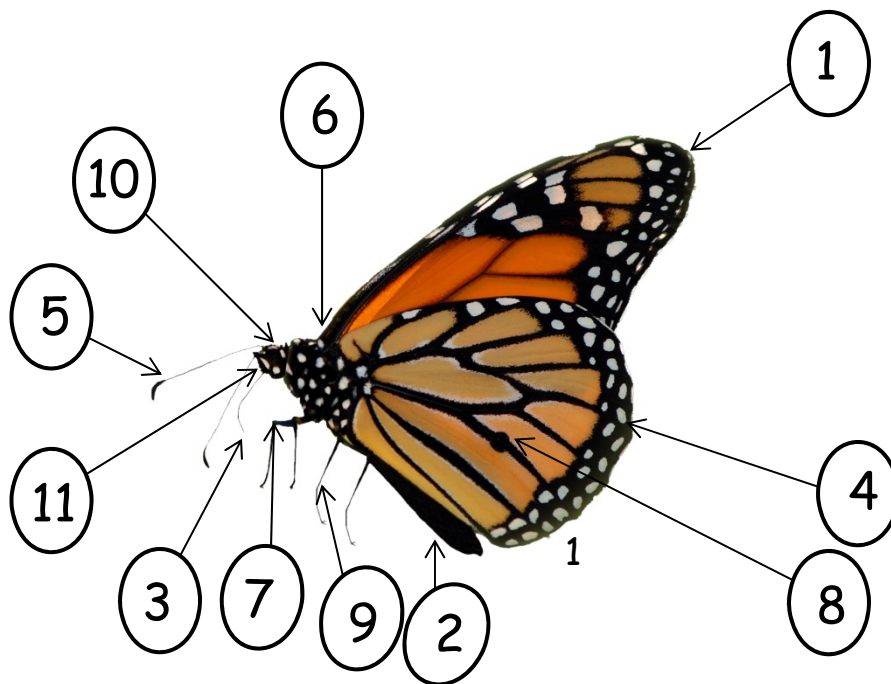




Butterfly Anatomy

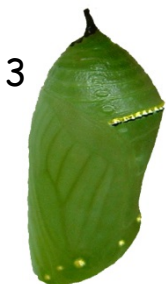
Can you match the correct parts to the butterfly? Write the correct number in the circle. Fill in the blanks below to complete the page.

- 1. Fore Wing 2. Abdomen 3. Proboscis 4. Hind Wing
- 5. Antenna 6. Thorax 7. Joint 8. Scent Spot
- 9. Legs 10. Head 11. Compound eye



1. This is a Butterfly/Adult

2. This is an Egg/Ova



3. This is a Chrysalis/Pupa

4. This is a Caterpillar/Larva